

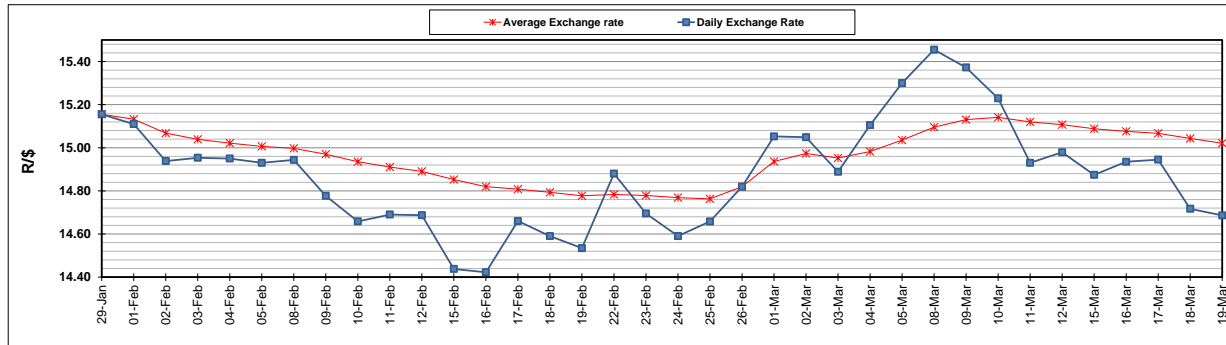
	PETROL 95 ULP	PETROL 93 ULP & LRP	DIESEL 0.05%	DIESEL 0.005%	ILL. PAR.
GAUTENG PUMP PRICE (SA c/l) AS FROM 03/03/2021	1,632.000	1,615.000	-	-	-
WHOLESALE PRICE (SA c/l) AS FROM 03/03/2021	-	-	1,412.420	1,416.820	845.688
SINGLE NATIONAL MAXIMUM RETAIL PRICE	-	-	-	-	1,071.000
BASIC FUEL PRICE - 19/03/2021 (SA c/l)	697.463	685.531	650.735	653.253	628.847
PRESS RELEASE CONTRIBUTION TO BFP 03/03/2021 - 19/03/2021 (SA c/l)	665.170	658.170	653.630	658.030	633.128
UNIT OVER/(UNDER) RECOVERY - 19/03/2021 (SA c/l)	(32.293)	(27.361)	2.895	4.777	4.281
AVERAGE BASIC FUEL PRICE 26/02/2021 - 19/03/2021	737.153	726.342	698.578	701.363	676.025
AVERAGE UNIT OVER/(UNDER) RECOVERY 26/02/2021 - 19/03/2021	(84.170)	(80.360)	(55.073)	(53.833)	(51.709)

ANALYSIS MOVEMENT OF AVERAGE OVER/(UNDER) RECOVERY

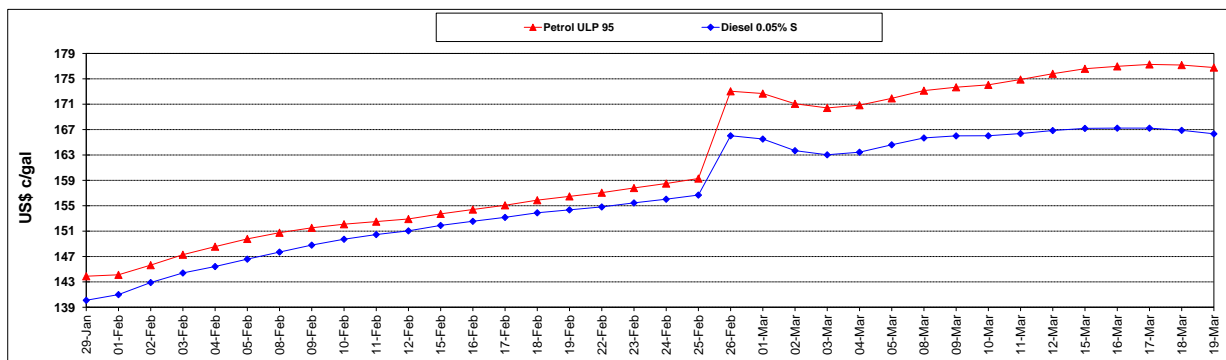
	PETROL 95	PETROL 93	DIESEL 0.05%	DIESEL 0.005%	ILL. PAR.
- MOVEMENT IN INTERNATIONAL PRODUCT PRICES	(71.509)	(67.883)	(43.074)	(41.787)	(40.098)
- MOVEMENT IN EXCHANGE RATE	(12.661)	(12.476)	(11.999)	(12.046)	(11.611)
AVERAGE UNIT OVER/(UNDER) RECOVERY 26/02/2021 - 19/03/2021	(84.170)	(80.360)	(55.073)	(53.833)	(51.709)

R/\$ EXCHANGE RATE - (R/\$14.6863 - 19/03/2021)

EXCHANGE RATE USED IN BASIC FUEL PRICE



INTERNATIONAL PRODUCT PRICES OF BASKET USED IN BASIC FUEL PRICE



BASIC FUEL PRICE IN SA CENTS PER LITRE

